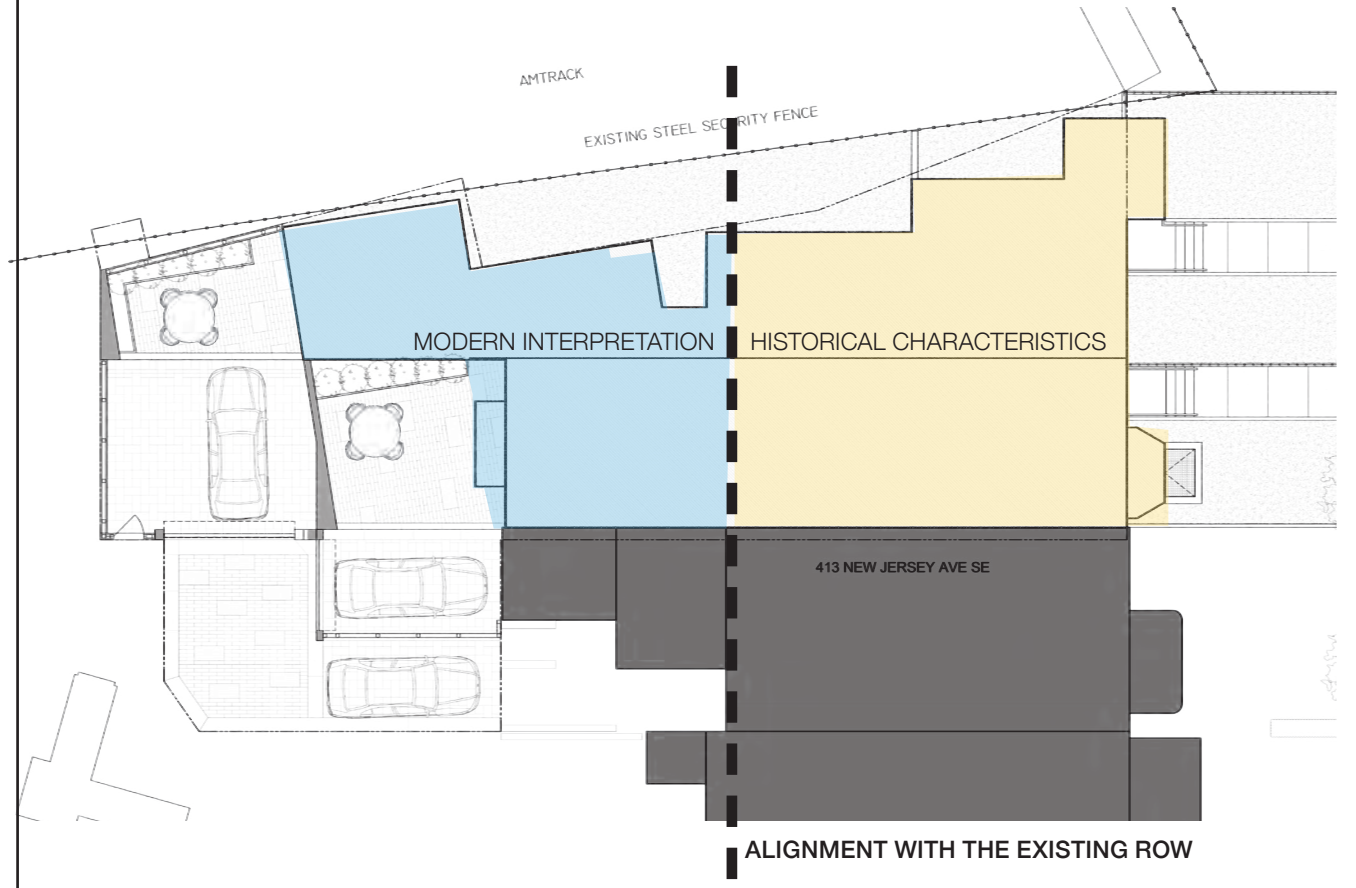


0 2' 4' 8' 16'

**PROPOSED SITE PLAN**  
 SCALE : 3/32" = 1'-0"



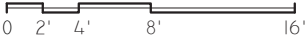


## PROPOSED

THE OVERALL PROPOSED DESIGN FOR THE TWO, SIDE BY SIDE, SINGLE FAMILY RESIDENCES REPRESENTS A UNION BETWEEN THE TRADITIONAL VICTORIAN STYLE OF THE ROW HOMES CURRENTLY ALONG NEW JERSEY AVE. AND A MODERN REPRESENTATION OF THE MORE INDUSTRIAL AND GRITTY CHARACTERISTICS OF THE ALLEY TO THE REAR OF THE PROPERTY. THE FRONT FACADE ALIGNS ITSELF WITH THE RHYTHM AND SITE LINES OF THE EXISTING STREET-SCAPE TO CREATE A CONTINUITY OF THE HISTORICAL ELEMENTS OF THE STREET. A TOWER IS ESTABLISHED ALONG THE CORNER TO PROVIDE A STRONG TERMINATION TO THE STREET-SCAPE. THE SAME LANGUAGE CONTINUES ALONG THE SIDE ELEVATION UNTIL REACHING THE ALIGNMENT OF BACK OF THE VOLUMES FROM THE REST OF THE ROW ALONG THE STREET. FROM THERE, A GLASS BREAK HAS BEEN IMPLEMENTED TO SEPARATE THE HISTORICAL DESIGN FROM THE MODERN DESIGN ALONG THE REAR. A MORE MODERN LANGUAGE READS ACROSS THE REMAINDER OF THE SIDE ELEVATION AND BECOMES FULLY INTEGRATED INTO THE REAR FACADES OF BOTH ROW HOMES. CHANGES IN MATERIALITY, APERTURE, ALIGNMENT, BUILDING VERNACULAR, AND OVERALL AESTHETIC HELP TO PROVIDE A DISTINGUISHED DIFFERENCE BETWEEN THE REVERENT TRADITIONAL PORTION OF THE HOMES ALONG THE FRONT, AND THE MODERN EXPRESSION OF THE HOMES ALONG THE REAR.

EXISTING STREETScape

NEW STRUCTURE



**FULL STREET ELEVATION**  
 SCALE : 3/32" = 1'-0"

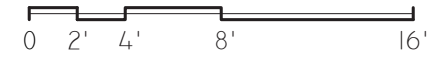


**FRONT ELEVATION**

- T.O. ROOF STRUCT — 79.16
- B.O. THIRD FLR. CEILING (FIN.) — 78.0
- T.O. THIRD FLR. (FIN.) — 69.5
- B.O. SECOND FLR. CEILING (FIN.) — 68.0
- T.O. SECOND FLR. (FIN.) — 58.5
- B.O. FIRST FLR. CEILING (FIN.) — 57.0
- T.O. FIRST FLR. (FIN.) — 47.0
- B.O. BSMT FLR. CLNG (FIN.) — 45.5
- BHMP — 43.7'
- T.O. BSMT FLR. (FIN.) — 35.5



**REAR ELEVATION**



**ELEVATIONS - PROPOSED**  
SCALE : 1/8" = 1'-0"





**SIDE ELEVATION**



**ELEVATIONS - PROPOSED**  
SCALE : 1/8" = 1'-0"